

Turkey Frank  
Ing # 000952

**Nutrition Facts**

Serving Size 1 Frank (56g)  
Servings Per Container 40

Amount Per Serving

Calories 120    Calories from Fat 90

% Daily Value\*

Total Fat 10g    15%

Saturated Fat 3g    14%

Cholesterol 45mg    16%

Sodium 630mg    28%

Total Carbohydrate 1g    0%

Dietary Fiber 0g    0%

Sugars 0g

Protein 8g

Vitamin A 0%    Vitamin C 2%

Calcium 2%    Iron 4%

\*Percent Daily Values are based on a diet of 2,000 calories.

**NET WT 20 LBS  
(4 - 5 LBS)**

KEEP FROZEN AT 0 DEGREES F. OR BELOW

**JUMBO  
TURKEY FRANKS**

WITH NATURAL SMOKE FLAVORING

INGREDIENTS: MECHANICALLY  
TURKEY, WATER, SALT, CORN SYR  
DEXTRROSE, SODIUM PHOSPHATES  
PAPRIKA, SODIUM ERYTHORBATE  
SMOKE FLAVORING, FLAVORING,  
NITRITE.

6128-69



VS02

JENNIE-O TURKEY STORE SALES, LLC  
WILLMAR, MN 56201 USA

238 R-1 4 2  
CN

FRANK TURKEY STORE SALES, LLC  
4/5 LB  
#135A1

7497134  
29916382  
890F1606  
90914068  
493859

SODEXO MEMORIAL MIDDLE S

This 2.00 oz. Turkey frank provides 2.00  
oz. equivalent meat for Child Nutrition Meal  
Pattern Requirements. (Use of this logo  
and statement authorized by the Food  
and Consumer Service, USDA 4-97).



# PRE-COOKED TURKEY BREAST & BBQ SAUCE



2851-28

UCC Manufacturer ID: 42222  
Product Category: IB  
Product Division: 2

## PRODUCT INFORMATION

### Product Features

- Fully Cooked
- Frozen
- Pre-Seasoned, Great Mild BBQ Flavor
- Heat and Serve Convenience
- CN Labeled
- Utilizes White Meat
- Contains No Allergens or Gluten

### Product Attributes

- Fully Prepared Turkey BBQ
- Great Alternative to Traditional Pork or Beef BBQ
- Boil-in-Bag – Steam or Stove Top Preparation
- Use Scoop/Disher #10 to Meet 2 oz. mt/mt alt.



LIST OF INGREDIENTS:  
WHITE TURKEY, WATER, SALT, SODIUM PHOSPHATE, BARBECUE SAUCE INGREDIENTS: WATER, TOMATO PASTE, SUGAR, VINEGAR, MOLASSES, MODIFIED FOOD STARCH, SALT, NATURAL SMOKE FLAVOR, CARAMEL COLOR, CHILI PEPPER, SPICES, ONION POWDER, SODIUM BENZOATE AND POTASSIUM SORBATE, GARLIC POWDER, PAPRIKA

## SPECIFICATIONS

Ship Container UPC:	1004222285183
Shelf Life:	365 days frozen from pack date
Code Date Qualifier:	N/A
Pallet Pattern:	13 x 5 = 65
<b>Full Pallet:</b>	
Net Weight:	1,820.00 lbs.
Gross Weight:	1,885.00 lbs.
Tare Weight:	65.00 lbs.
Catch Weight?	N

## MASTER DIMENSIONS

Case Dimensions:	14.3"L x 9.3"W x 10.37"H
Cubic Feet:	0.7995
Net Weight:	28.00 lbs.
Gross Weight:	29.00 lbs.
Tare Weight:	1.00 lbs.
Pack:	4/7 lbs.
Servings Per Case:	102

## PREPARATION/HANDLING

### BOIL-IN-BAG

- Fill large pot with water and bring to boil. Place frozen or thaw bags of product in boiling water.
- Reduce to a simmer and heat for 30 to 60 minutes until product reaches an internal temperature of 140°F.
- Cut open bag and pour package contents into desired serving pan.
- Cover and keep hot until ready to serve.

### STEAMER

- Place frozen or refrigerated product into a steam pan place into steamer.
- Heat for 20 to 30 minutes or until product reaches an internal temperature of 140°F.
- Cut open bag and pour package contents into desired serving pan.
- Cover and keep hot until ready to serve.

Jennie-O Turkey Store certifies that the above information is true and correct, and that a 4.37 ounce serving of the above product (ready for serving) contains 2 ounces of cooked lean meat/meat alternate when prepared according to directions.

## NUTRITIONAL INFORMATION PER 2 OZ. MT./MT. ALTERNATE SERVING

Svg Size (oz.)	Calories (Kcal)	Total Fat (g)	Sat. Fat (g)	Trans Fat (g)	Cholest. (mg)	Sodium (mg)	Carbs (g)	Fiber (g)	Protein (g)	Vit. A (%)	Calcium (%)	Vit. C (%)	Iron (%)
4.37	140	1.5	.5	0	40	800	15	0	17	0	6	4	8

BBQ Turkey  
Ing # 117317

VS01

KEEP FROZEN AT 0 DEGREES F. OR BELOW



2851-28

FOR INSTITUTIONAL USE

JENNIE-O TURKEY STORE SALES, LLC, WILLMAR, MN 56201 USA



1004222285183

DICED

WHITE TURKEY

WITH BARBECUE SAUCE

NET WT 28 LBS (4-7 LBS)



069278

EACH 4.36 OZ. SERVING (BY WEIGHT) OF DICED WHITE TURKEY WITH BARBECUE SAUCE PROVIDES 2.00 OZ. EQUIVALENT MEAT FOR CHILD NUTRITION MEAL PATTERN REQUIREMENTS. (USE OF THIS LOGO AND STATEMENT AUTHORIZED BY THE FOOD AND NUTRITION SERVICE, USDA 02-07).



INGREDIENTS: WHITE TURKEY, WATER, SALT, SODIUM PHOSPHATE, BARBECUE SAUCE

INGREDIENTS: WATER, TOMATO PASTE, SUGAR, VINEGAR, MOLASSES, MODIFIED FOOD STARCH, SALT, NATURAL SMOKE FLAVOR, CARAMEL COLOR, CHILI PEPPER, SPICES, ONION POWDER, SODIUM BENZOATE AND POTASSIUM SORBATE, GARLIC POWDER, PAPRIKA.

# PREMIUM TURKEY THIGH SAUSAGE LINK, 1.6 OZ.



6137-35

UCC Manufacturer ID: 42222  
Product Category: FP  
Product Division: 2

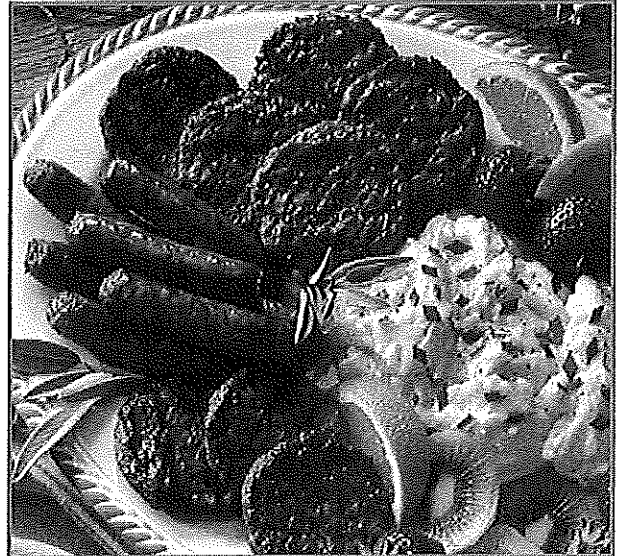
## PRODUCT INFORMATION

### Product Features

- Included in the A-582 Thigh Commodity Program
- Fully Cooked Seasoned Links
- 300/1.60 oz. Links per Case
- Individually Quick Frozen and Layer Packed
- Utilizes Thigh Meat
- Contains No Allergens or Gluten

### Product Attributes

- Easy Preparation – Just Heat and Serve
- Fully Cooked Meat Eliminates Many Food Safety Concerns
- Great Alternative to Pork Sausage
- Great with Pancakes and French Toast



LIST OF INGREDIENTS:  
TURKEY, WATER, SEASONING (SALT, SUGAR, SPICES (INCLUDING SAGE AND RED PEPPER), DEXTROSE, BHA, BHT, CITRIC ACID), CONTAINS 2% OR LESS MODIFIED FOOD STARCH, CORN SYRUP SOLIDS, NATURAL FLAVOR (POTATO MALTODEXTRIN, NATURAL FLAVOR, GUM ARABIC, SALT), SODIUM PHOSPHATE, SALT.

## SPECIFICATIONS

<b>Ship Container UPC:</b>	10042222613757
<b>Shelf Life:</b>	180 days frozen from pack date
<b>Code Date Qualifier:</b>	N/A
<b>Pallet Pattern:</b>	11 x 7 = 77
<b>Full Pallet:</b>	
Net Weight:	2310.00 lbs.
Gross Weight:	2368.52 lbs.
Tare Weight:	58.52 lbs.
Catch Weight?	N

## PREPARATION/HANDLING

Thaw product in refrigerator.

**Stove top:** Lightly oil sauté pan or flat top grill. Heat over medium heat approximately 3-4 minutes per side until browned and heated and internal temperature reaches 140°F.

**Oven:** Place links in a single layer in a pan. Cover and heat in 325°F oven for 20-25 minutes or until internal temperature reaches 140°F.

## MASTER DIMENSIONS

<b>Case Dimensions:</b>	20.3"L x 11.5"W x 4.9"H
<b>Cubic Feet:</b>	0.662
<b>Net Weight:</b>	30.00 lbs.
Gross Weight:	30.76 lbs.
Tare Weight:	0.76 lbs.
<b>Pack:</b>	300/1.6 oz.
<b>Servings Per Case:</b>	300

Jennie-O Turkey Store certifies that the above information is true and correct, and that a 1.6 ounce serving of the above product (ready for serving) contains 1 ounce of cooked lean meat/meat alternate when prepared according to directions.

## NUTRITIONAL INFORMATION PER 1 OZ. MT./MT. ALTERNATE SERVING

Svg Size (oz.)	Calories (Kcal)	Total Fat (g)	Sat. Fat (g)	Trans Fat (g)	Cholest. (mg)	Sodium (mg)	Carbs (g)	Fiber (g)	Protein (g)	Vit. A (%)	Calcium (%)	Vit. C (%)	Iron (%)
1.6	70	4	1	0	30	540	2	0	7	0	0	0	4

Turkey Sausage Patty  
 Ing # 117330  
 Recipe # 96910

# PRE-COOKED TURKEY SAUSAGE PATTY, 1.025 OZ.



6132

UCC Manufacturer ID: 42222  
 Product Category: FP  
 Product Division: 2

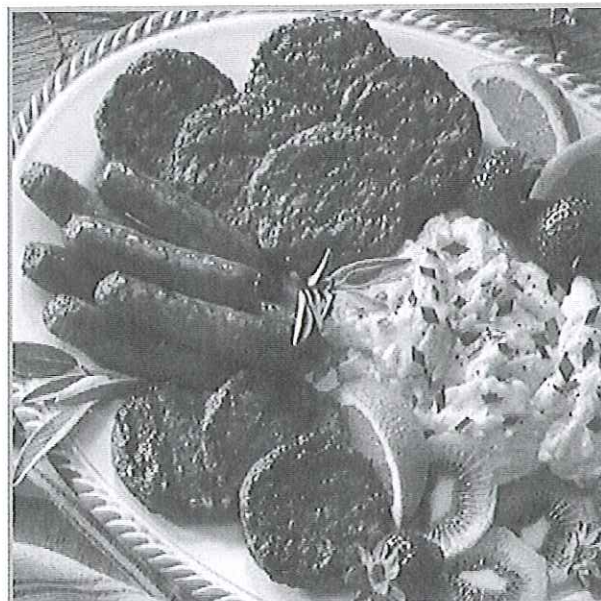
## PRODUCT INFORMATION

### Product Features

- Pre-Cooked Seasoned Patties
- 160/1.025 oz. Patties per Case
- Individually Quick Frozen and Layer Packed
- Utilizes Dark Meat
- Contains No Allergens or Gluten

### Product Attributes

- Easy Preparation – Just Heat and Serve
- Seasoned “Country Style” for Great Taste
- Pre-Cooked Meat Eliminates Many Food Safety Concerns
- Great Alternative to Pork Sausage
- Great for Breakfast Sandwiches



LIST OF INGREDIENTS:  
 TURKEY, CONTAINS 2% OR LESS SALT, FLAVORINGS, SUGAR, DEXTROSE, BHA, PROPYL GALLATE, CITRIC ACID

## SPECIFICATIONS

**Ship Container UPC:** 10042222613207  
**Shelf Life:** 180 days frozen from pack date  
**Code Date Qualifier:** N/A  
**Pallet Pattern:** 9 x 9 = 81  
**Full Pallet:**  
 Net Weight: 830.25 lbs.  
 Gross Weight: 870.75 lbs.  
 Tare Weight: 40.50 lbs.  
 Catch Weight? N

## MASTER DIMENSIONS

**Case Dimensions:** 16.7”L x 11.1”W x 4.2”H  
**Cubic Feet:** 0.4506  
**Net Weight:** 10.25 lbs.  
 Gross Weight: 10.75 lbs.  
 Tare Weight: 0.50 lbs.  
**Pack:** 160/1.025 oz.  
**Servings Per Case:** 160

## PREPARATION/HANDLING

Thaw product in refrigerator.

**Stove top:** Lightly oil sauté pan or flat top grill. Heat over medium heat approximately 3-4 minutes per side until browned and heated and internal temperature reaches 140°F.

**Oven:** Place patties in a single layer in a pan. Cover and heat in 325°F oven for 20-25 minutes or until internal temperature reaches 140°F.

Jennie-O Turkey Store certifies that the above information is true and correct, and that a 1.025 ounce serving of the above product (ready for serving) contains 1 ounce of cooked lean meat/meat alternate when prepared according to directions.

## NUTRITIONAL INFORMATION PER 1 OZ. MT./MT. ALTERNATE SERVING

Svg Size (oz.)	Calories (Kcal)	Total Fat (g)	Sat. Fat (g)	Trans Fat (g)	Cholest. (mg)	Sodium (mg)	Carbs (g)	Fiber (g)	Protein (g)	Vit. A (%)	Calcium (%)	Vit. C (%)	Iron (%)
1.025	60	4.5	1	0	30	100	0	0	6	0	2	0	2

Sausage Patty, Turkey  
Ing# 905926

**Classic**  
**SYSCO**

KEEP FROZEN 0°F OR BELOW

10/1 LB

FULLY COOKED AND BROWNED

**TURKEY BUFFET STYLE PATTIES**

A TURKEY AND VEGETABLE PROTEIN PRODUCT  
CITRIC ACID AND BHA ADDED TO HELP PROTECT FLAVOR

INGREDIENTS: TURKEY, WATER, TEXTURED VEGETABLE PROTEIN PRODUCT  
(SOY PROTEIN CONCENTRATE, ZINC OXIDE, NIACINAMIDE, FERROUS SULFATE, COPPER GLUCONATE,  
VITAMIN A PALMITATE, CALCIUM PANTOTHENATE, THIAMINE MONONITRATE [B1], PYRIDOXINE  
HYDROCHLORIDE [B6], RIBOFLAVIN [B2], CYANOCOBALAMIN [B12]), SALT, CORN SYRUP SOLIDS, SPICES,  
HYDROLYZED SOY PROTEIN, FLAVORING, CITRIC ACID, BHA.

CONTAINS SOY

**6021372**



0 00 74865 78444 3

**NET WT 10 LB (4.5 kg)**

**Nutrition Facts**

Serving Size: 1 patty (45g/1.6oz)  
Servings Per Container 100

Amount Per Serving		%Daily Value*	
<b>Calories</b> 70	<b>Calories From Fat</b> 40		
<b>Total Fat</b> 4.5g			<b>7%</b>
<b>Saturated Fat</b> 2g			<b>9%</b>
<b>Trans Fat</b> 0g			
<b>Cholesterol</b> 25mg			<b>8%</b>
<b>Sodium</b> 320mg			<b>13%</b>
<b>Total Carbohydrate</b> less than 1g			<b>0%</b>
<b>Sugars</b> less than 1g			
<b>Protein</b> 8g			
<b>Iron</b> 4%			
Not a significant source of dietary fiber, vitamin A, vitamin C, and calcium.			
*Percent Daily Values are based on a 2,000 calorie diet. Your daily values may be higher or lower depending on your calorie needs:			
	Calories:	2,000	2,500
Total Fat	Less than	65g	80g
Sat Fat	Less than	20g	25g
Cholesterol	Less than	300mg	300mg
Sodium	Less than	2,400mg	2,400mg
Total Carbohydrate	Less than	300g	375g
Dietary Fiber		25g	30g
Calories per gram: Fat 9 • Carbohydrate 4 • Protein 4			

CN 076205  
ONE 1.6 OZ. FULLY COOKED TURKEY BUFFET  
STYLE PATTY PROVIDES 1.0 OZ. EQUIVALENT MEAT/  
MEAT ALTERNATE FOR CHILD NUTRITION MEAL  
PATTERN REQUIREMENTS. (USE OF THIS LOGO  
AND STATEMENT AUTHORIZED BY THE  
FOOD AND NUTRITION SERVICE 10/09).  
CN



801007

51  
DISTRIBUTED BY SYSCO CORPORATION, HOUSTON, TEXAS 77077-2099

Canadian Bacon  
 Ing #900491

2010-2011 School Year

# SLICED CANADIAN STYLE BACON TURKEY HAM, .75 OZ.



2031

UCC Manufacturer ID: 42222  
 Product Category: LI  
 Product Division: 2

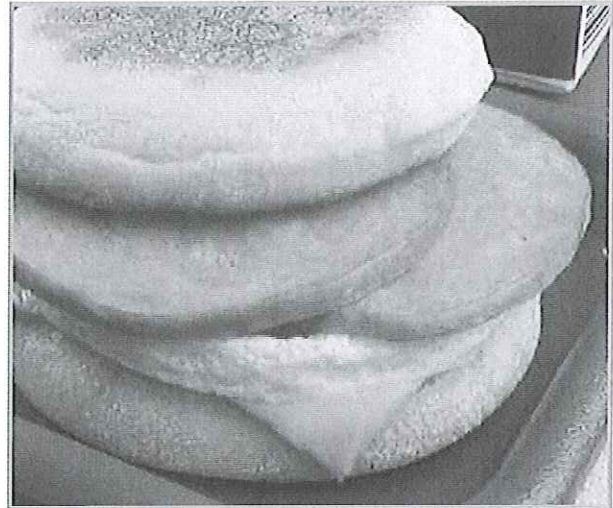
## PRODUCT INFORMATION

### Product Features

- Pre-Cooked
- Smoked & Cured
- Frozen
- 3/4 oz. Round Slice
- Naturally Lean
- 20% Water Added
- CN Labeled
- Utilizes Dark Meat
- Contains No Allergens or Gluten

### Product Attributes

- Use for Breakfast, Sandwiches, Pizza Toppings
- Pre-Sliced for Convenience/Portion Control, Labor Reduction and Food Safety
- Great Alternative to Pork Canadian Bacon



LIST OF INGREDIENTS:  
 TURKEY THIGH MEAT, WATER, CONTAINS 2% OR LESS LITE SALT (POTASSIUM CHLORIDE, SODIUM CHLORIDE), SUGAR, SALT, SODIUM PHOSPHATE, SODIUM ERYTHORBATE, NATURAL SMOKE FLAVORING, SODIUM NITRITE

## SPECIFICATIONS

**Ship Container UPC:** 1004222203101  
**Shelf Life:** 365 days frozen from pack date  
**Code Date Qualifier:** N/A  
**Pallet Pattern:** 9 x 9 = 81  
**Full Pallet:**  
 Net Weight: 2,025.00 lbs.  
 Gross Weight: 2,114.10 lbs.  
 Tare Weight: 89.10 lbs.  
 Catch Weight? N

## PREPARATION/HANDLING

Thaw package in refrigerator. Product is fully cooked and can be used right out of the package for cold applications or heated for hot applications. Can be used as ingredient for sandwiches or pizza topping.

## MASTER DIMENSIONS

**Case Dimensions:** 14.9"L x 12.1"W x 6.8"H  
**Cubic Feet:** 0.7095  
**Net Weight:** 25.00 lbs.  
 Gross Weight: 26.10 lbs.  
 Tare Weight: 1.10 lbs.  
**Pack:** 8/3.125 lbs.  
**Servings Per Case:** 267

Jennie-O Turkey Store certifies that the above information is true and correct, and that a 1.5 ounce serving of the above product (ready for serving) contains .75 ounces of cooked lean meat/meat alternate when prepared according to directions.

## NUTRITIONAL INFORMATION PER .75 OZ. MT./MT. ALTERNATE SERVING

Svg Size (oz.)	Calories (Kcal)	Total Fat (g)	Sat. Fat (g)	Trans Fat (g)	Cholest. (mg)	Sodium (mg)	Carbs (g)	Fiber (g)	Protein (g)	Vit. A (%)	Calcium (%)	Vit. C (%)	Iron (%)
1.5	50	2.5	1	0	30	310	1	0	6	0	0	0	2