

Ricotta Cheese  
Ing. # 905989

Saputo

**FRIGO**  
QUALITY SINCE 1938

PART SKIM  
**Ricotta**  
CHEESE

FRESH!  
EASY!  
FRIGO!

**Nutrition Facts**

Serving Size 1/4 cup (62g)  
Servings Per Container about 37

Amount Per Serving	
Calories 100 Calories from Fat 60	
% Daily Value*	
Total Fat 7g	10%
Saturated Fat 4.5g	24%
Trans Fat 0g	
Cholesterol 35mg	12%
Sodium 240mg	10%
Total Carbohydrate 3g	1%
Dietary Fiber 0g	0%
Sugars 2g	
Protein 6g	

Vitamin A 6% • Vitamin C 0%  
Calcium 10% • Iron 0%

\*Percent Daily Values are based on a 2,000 calorie diet. Your daily values may be higher or lower depending on your calorie needs:

	Calories: 2,000	2,500
Total Fat	Less than 65g	80g
Total Fat	Less than 20g	25g
Cholesterol	Less than 300mg	300mg
Sodium	Less than 2400mg	2400mg
Total Carbohydrate	300g	375g
Dietary Fiber	25g	30g

Calories per gram:  
Fat 9 • Carbohydrates 4 • Protein 4

Saputo

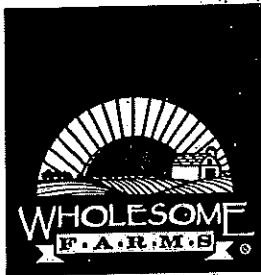
Saputo Cheese USA Inc.  
Lincolnshire, IL 60468  
www.saputo.com

INGREDIENTS: PASTEURIZED MILK, PASTEURIZED WHEY, PASTEURIZED CREAM, VINEGAR, SALT, STABILIZER (MODIFIED FOOD STARCH, GUAR GUM, CARAGEENAN), POTASSIUM SORBATE TO PROTECT FLAVOR.

SELL BY DATE STAMPED ON BOTTOM



Cottage Cheese, 4%  
Ing#905937



# Small Curd Cottage Cheese<sup>KD</sup>

4% Milkfat Min GRADE A



Nutrition Facts	
Serving Size 1/2 Cup (113g)	
Servings Per Container About 20	
Amount Per Serving	
Calories 120 Calories from Fat 45	
	% Daily Value*
Total Fat 5g	8%
Saturated Fat 3g	16%
Trans Fat 0g	
Cholesterol 15mg	6%
Sodium 400mg	17%
Total Carbohydrate 5g	2%
Dietary Fiber 0g	0%
Sugars 4g	
Protein 13g	
Vitamin A 4%	Vitamin C 2%
Calcium 10%	Iron 0%

\*Percent Daily Values are based on a 2,000 calorie diet. Your daily values may be higher or lower depending on your calorie needs:

Calories:	2,000	2,500
Total Fat	Less than 65g	80g
Sat. Fat	Less than 20g	25g
Cholesterol	Less than 300mg	300mg
Sodium	Less than 2,400mg	2,400mg
Total Carbohydrate	300g	375g
Dietary Fiber	25g	30g

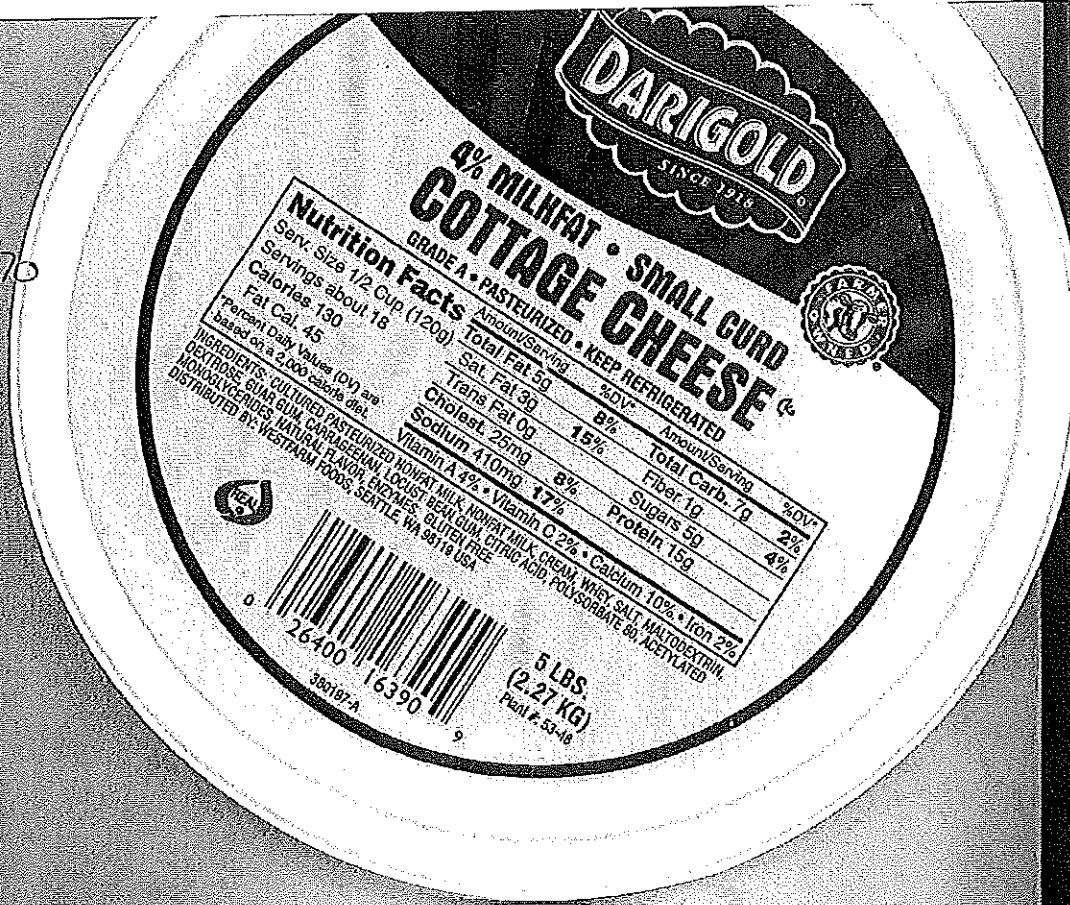
**INGREDIENTS:** Cultured/Pasteurized Nonfat Milk, Milk & Cream, Salt, Whey, Mono- and Diglycerides, Modified Food Starch (corn), Calcium Phosphate, Carbon Dioxide (to maintain freshness), Citric Acid, Guar Gum, Locust Bean Gum, Carrageenan, Calcium Sulfate, Sodium and Potassium Phosphate and Enzymes.

KEEP REFRIGERATED  
33°F-40°F

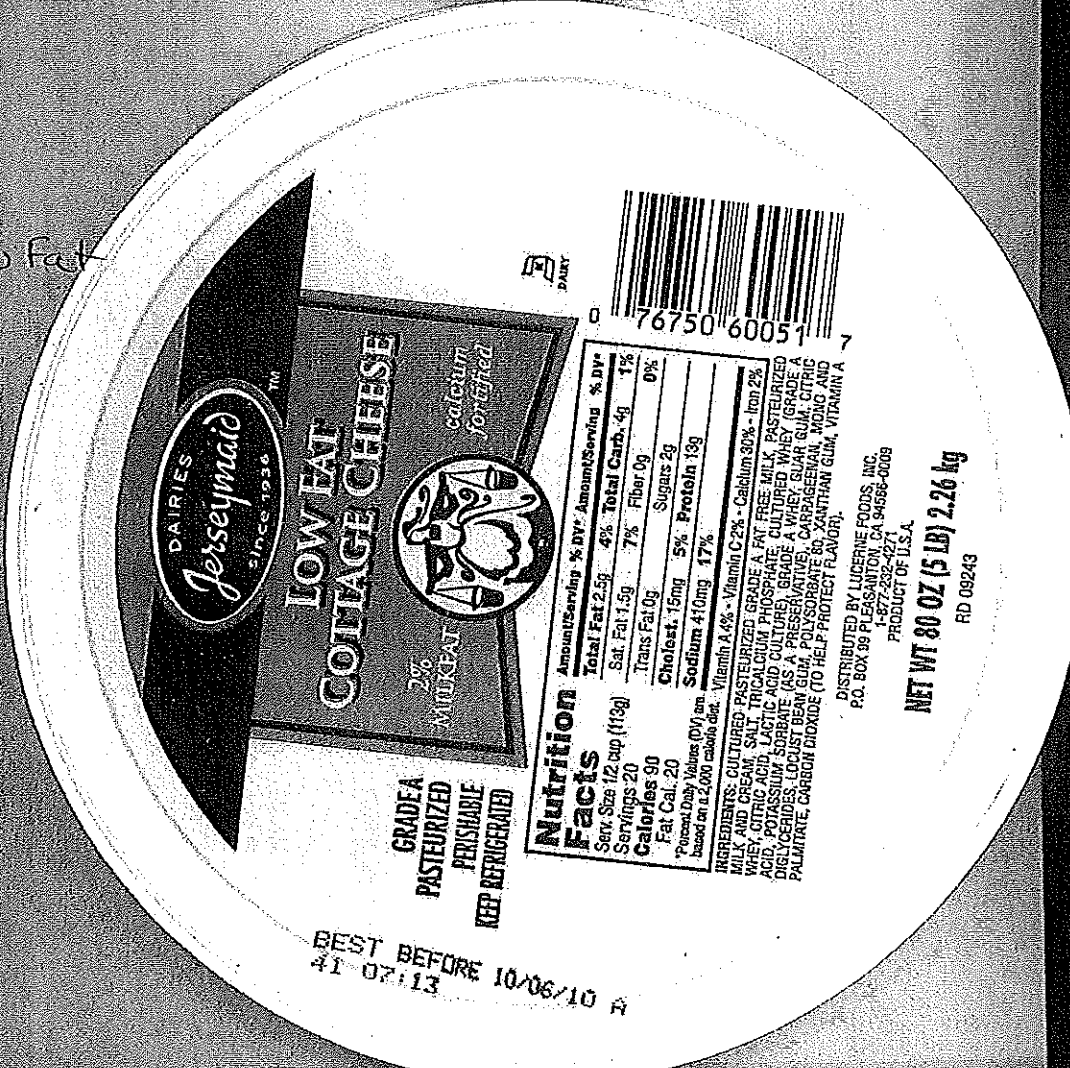


**NET WT 5 LBS (2.27 kg)**  
002956 • 5020896  
DISTRIBUTED BY SYSCO CORPORATION, HOUSTON, TEXAS 77077-2099  
MFG AT PLANT NO 06-71

Cottage Cheese 470  
 Inv # 905927



Lasagna  
 Cottage Cheese, Low Fat  
 Inv # 9910809



Cream Cheese, Whipped

Ing# 905928



**Nutrition Facts**

	Amount/Serving	%DV*	Amount/Serving	%DV*
Serving Size 2 Tbsp. (20g)				
Servings About 60				
Calories 70				
Calories from Fat 60				
*Percent Daily Values (DV) are based on a diet of 2,000 calories.				
	<b>Total Fat 7g</b>	11%	<b>Total Carbohydrate 1g</b>	0%
	<b>Saturated Fat 4.5g</b>	23%	<b>Dietary Fiber 0g</b>	0%
	<b>Trans Fat 0g</b>		<b>Sugars 1g</b>	0%
	<b>Cholesterol 20mg</b>	7%	<b>Protein 1g</b>	0%
	<b>Sodium 65mg</b>	3%		
	<b>Vitamin A 4%</b>		<b>Vitamin C 0%</b>	
	<b>Calcium 0%</b>		<b>Iron 0%</b>	

INGREDIENTS: PASTEURIZED MILK AND CREAM CHEESE, CULTURE, SALT, STABILIZERS (CAROB BEAN AND/OR XANTHAN AND/OR GUAR GUMS), NATAMYON (A NATURAL MOLD INHIBITOR). CONTAINS MILK.

MANUFACTURED BY SCHREIBER FOODS, INC.  
GREEN BAY, WI 53007  
PASTEURIZED - KEEP REFRIGERATED

30900 01617  
01/17  
DR62P

NET WT. 48 OZ. (3 LB.) 1.36kg

Cream cheese

Qty # 900758

